

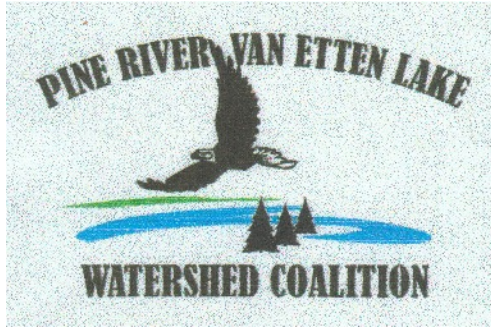
2023 Regular Coalition Meetings

April 13

July 13

Oct 12

Alcona Conservation Office  
US 23, Harrisville, MI



Working Together to Restore and Protect Our Natural Resources

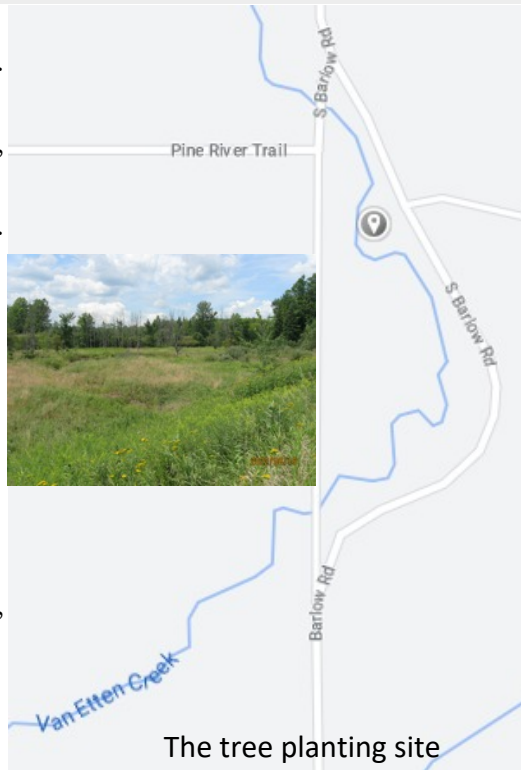
Van Etten Creek Riparian Buffer Project Update  
By Russell Williams, PRVEL Board Chair

This project has been in the works for a couple of years. Our first grant application was declined but we stuck with it, the second application the following year was successful. This project will establish a treed riparian buffer strip along Van Etten Creek. The Van Etten Creek watershed is primarily located in Harrisville Township.

The buffer will consist of 300 trees planted along the creek close to Barlow Road, about 2.5 miles north of Kings Corner Road which is the southern boundary of Alcona County. Not far downstream

from the planned buffer the creek flows into the Pine River, which then flows more or less due south and enters Iosco County.

The grant is for \$12,917 and is part of the nonpoint source grant program through EGLE (Michigan Department of Environment, Great Lakes, and Energy) - it is a reimbursement grant. The key word here is *reimbursement*. The Pine River Van Etten Lake Watershed Coalition (PRVEL), by itself, does not have sufficient reserves to fund the project



The tree planting site

up front - It is currently working with key partners to cover the gap, those partners being the Alcona Conservation District, and the Iosco Conservation District.

On February 13<sup>th</sup> the Iosco Conservation District Board of Directors voted to approve temporary working funds in the amount of \$4,000. This action is a statement of strong support for conservation of the area's natural resources and demonstrates their commitment to cooperation with the PRVEL and the Alcona Conservation District.

The planting field work is planned for Friday May 12<sup>th</sup>, and

Saturday May 13<sup>th</sup>. As much preparation work as possible, such as mowing, planting hole digging, will be done during the preceding days. Volunteers are needed to help with the actual planting on Friday and Saturday. Lunch and pop will be provided, as will a T-shirt to commemorate the efforts of the willing. In the case of rough weather we will delay the fieldwork for a week. **To volunteer or learn more give Russell a call at 989-310-6408 or email at [jrusswill@gmail.com](mailto:jrusswill@gmail.com).**

## Pine River Watershed Temperature Monitoring Program Update

All trout need clean, cold water. Different species of trout have different temperature tolerances. For most adult trout, water temperatures in the 70s (°F) are lethal although they may survive higher temperatures for a short time.

Native Brook trout populations are generally most successful with water temperatures less than 66 (°F). Adults can tolerate temperatures up to about 77 (°F).

Brown Trout, native to Europe and Asia, were introduced to Michigan in 1883. They now thrive here statewide. Brown Trout prefer water temperatures of 50 to 65 (°F)..

The PRVEL temperature monitoring program has been conducted since 2014 in cooperation with

the Michigan Department of Natural Resources (MDNR). PREVL monitors nine locations throughout the watershed. Temperature loggers are placed in the streams or river in late May and begin recording water temperatures on June 1st through September 1st. The temperatures are recorded twice daily, once at noon and again at midnight. The loggers are then sent to MDNR where the data is pulled and tabulated from each temperature monitor. Last year our average temps ran slightly below past years averages. We will continue to monitor temperatures to better understand fisheries habitat and to monitor long term trends and any abnormal changes..

### Temperature Meter sites 2014 through 2022 July and August Compositied Measurements

	Years	Temperature Deg F	
	Monitored	Avg.	Max.
South Br Pine Rv - USFS 4121	5	61.3	63.0
South Br Pine Rv - Buhl Dam site	7	62.8	65.0
McGillis Ck - Buhl Road	6	63.2	66.0
West Br Pine Rv - Bean Hill Rd	7	60.1	62.0
West Br Pine Rv - Cruzen Rd	7	64.9	68.0
East Br Pine Rv - McConnell Rd	6	61.3	63.0
East Br Pine Rv - Tait Rd	9	64.1	66.0
Coppler Ck - F41	7	58.1	61.0
Pine River - Kings Corner Rd	7	66.9	70.0

### AN ENJOYABLE DAY IN THE FOREST

As presented in previous issues, you probably already know about the importance of macro-invertebrates like stoneflies and caddisflies. These insects are indicators of stream health. An unhealthy stream may only support midges and blackfly larvae, while a healthy one contains a diverse range of macro-invertebrates. Rather than just reading about this thought, join us creek side this spring or next fall to enjoy a day in the forest and experience seeing the fascinating 'catches' in person. Who knows, you may decide to help by joining on the picking and catching.

Contact Deb at [millerdb613@gmail.com](mailto:millerdb613@gmail.com) for more information

**E. COLI SAMPLING UPDATE**  
 by Dan Steck, Water Quality Monitor

Samples were taken on six dates from six locations on the Pine River system in 2022. A summary of the results are included in Table 1. Five base locations were sampled this year; the Pine River at the county line, the East/West Branch at Tait, the West and South Branches and Van Etten Creek at Pine River Trail. Samples were also collected on four occasions from Van Etten Creek at Dellar Road.

**Table 1 - Pine River Watershed E. coli Monitoring**

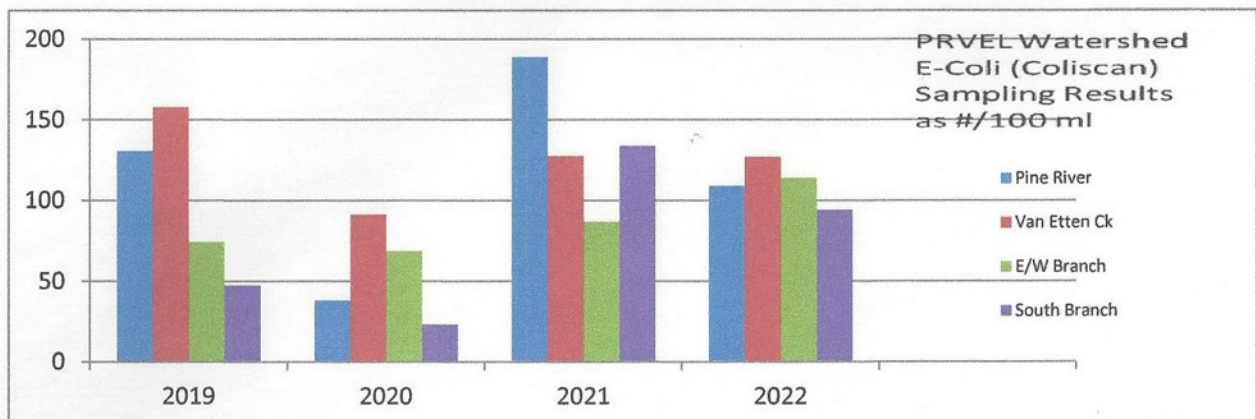
Location	2021				2022				Totals for 11 Years of Results				
	Site No.	No.	Mean #/100 ml	Max.	Min.	No.	Mean #/100 ml	Max.	Min.	No.	Mean #/100 ml	Max.	Min.
Pine River @ County Line	1	6	189	460	80	6	109	260	20	66	93	460	0
So Br Pine @ Cruzen	4	6	104	380	20	6	94	240	20	66	47	380	0
Van Etten Crk @ Barlow	11	6	127	330	50	6	127	300	60	66	100	660	0
Van Etten Crk @ Dellar	18	3	168	370	80	4	115	200	40	7	283	570	40
E. Br Pine River @ Tait	32	6	56	300	0	6	97	220	20	17	98	340	0
W. Br Pine @ Cruzen	41	6	134	440	20	6	134	300	60	53	53	440	0
Home tap water		6	0			6	0			60	0		

No. and # = Number

All results are expressed as CFU (colony forming units)/100ml

All samples incubated for 48 hours @ 95 +/- 3 deg. F

1. The geometric means for only one of the six sites sampled in 2022 were higher than 130 CFU/100 ml state standards for swimming waters and one site. Two of the sampling sites exceeded the 300 CFU/100 ml single sample concentration for the same standard on at least one occasion following heavy rains.
2. **The bacteriological quality of the streams sampled in the watershed continues to be acceptable with no indicators of gross pollution.**
3. A continuation of the sampling program at these base sampling points is planned for 2023.





## A GOOD FISH STORY A Pine River Fisherman

It was the first weekend in May and a bunch of college buddies came up north for the weekend. We decided to start the day on a Morel mushroom hunt at my property. As we left the pole barn, I said, “Let’s take some fishing poles and give it a try”. So we scavenged up some small Mepps Spinners and off we went.



One of the Brook Trout we caught

After being unsuccessful finding any Morels, we then hiked over to the Pine River, which runs through a section of my land, not expecting much from a fairly small stream section. I love to fish, but that usually means lake fishing for walleye. Well, would you believe it, on the first cast, one of the guys caught a nice Brown Trout – about 16 inches long! And then came a Rainbow! And then a few Brook Trout!. It was awesome and surprised all of us. We ended up with three Brown Trout, one Rainbow and five Brook Trout. I took a couple of pictures ( see inserts).

My love of the outdoors brings me many encounters with nature's bounty, but that particular day, the timing was just right. The water temps were still cold enough at our stretch of the Pine to hold some nice Trout. We released all the fish we caught, returning them to their natural habitat. Why? So they could breed and spawn more fish that can then be potentially caught and released – a great conservation strategy. What a great day!



One of the Brown Trout we caught

## WATERSHED WILDLIFE WATCH - EASTERN BUMBLE BEE



Drone and Queen mating on Jerusalem  
Artichoke  
Wikipedia photo by D. Gordon Robertson

Did you know that Michigan is the home of hundreds of bee species? The common Eastern bumble bee is the most widespread of these and has a considerable pollination role, beneficial to state flowers, fruits, and vegetables. Bees eat pollen and nectar, which is then turned into honey by regurgitation. They are social insects and live in colonies, sometimes containing 300 to 500 insects.

A newly mated queen bee hibernates over the winter and then emerge in early spring to nest, producing worker bees first, then males and new queens by end of summer. In the fall, workers, males, and the old queen die.

Pollinators worldwide are in decline, due to habitat loss, pesticides, invasive species, and parasites.

We can all help in the effort to maintain and/or increase bee populations by planting flowering shrubs, perennials, and trees, like maples, basswood, black locust, and a variety of fruit trees.

**Mark Your Calendars!**

Michigan Lake and Streams Association 62<sup>st</sup> Annual Conference will be at

Crystal Mountain Resort, Thompsonville, MI 49683

May 5 and 6, 2023

**Protecting and Restoring Michigan's Lakes and Streams**

The keynote speaker, Ted Rulseh is the author of "Ripple Effects: How We're Loving Our Lakes to Death." He is also an active advocate for taking care of our inland lakes.

With In person attendance this year participation in numerous breakout sessions, networking, and fellowship opportunities with riparians, academics, agency staff, and water resource professionals from across the state will be possible.

For more information visit the ML&SA 62<sup>st</sup> Annual Conference web page at

<https://mymlsa.org/mlsa>

**GIVING TUESDAY DONORS SUPPORT PRVEL GOALS**

For the past several years PRVEL fundraising efforts have centered on the annual Giving Tuesday campaign. After missing out last year, the board opted to rejoin Giving Tyesday. Our decision was justified and rewarded as 11 donors contributed \$1,580 including \$500 received from the Van Etten Lake Association to help us with our efforts to preserve and protect the watershed.

The PRVEL board wishes to thank everyone who contributed to the 2022 fundraising effort for their support of PRVEL's projects and programs.

**2022 Treasury Report**

January 1,2022 Balance	\$5,857.76
<b>Income</b>	
Donations, General	145.00
Giving Tuesday	1080.00
VELA	500.00
Grants	0.00
Interest	2.54
<b>Total Income</b>	<b>\$1,727.54</b>
<b>Program Expenses</b>	
Macro Sampling	194.96
Coliform Sampling	158.97
P/TSS Sampling	387.46
Temp Loggers	0.00
<b>Admin Expenses</b>	
Chamber Dues	60.00
Newsletter	43.90
Flyers	91.00
Postage & Copies	24.00
PO Box Rental	84.00
MI Non-profit Inc	20.00
<b>Total Expenses</b>	<b>\$1,064.29</b>
<b>Balance December 31, 2022</b>	<b>\$6,521.01</b>

**CONSIDER BEING A RIVER KEEPER**

Our River Keepers watch out for things that could be problematic or might require some action to be taken to protect the watershed. They also report natural occurrences like animal sightings or the quality of fishing/hunting. The program is aimed at establishing a better monitoring system to cover the large area encompassed within the watershed.

**Please consider being a River Keeper** and contact Carole Plunkey at [caroleplunkey@charter.net](mailto:caroleplunkey@charter.net)

PRVEL Coalition Board

Chair - Russell Williams	<a href="mailto:jrusswill@gmail.com">jrusswill@gmail.com</a>
Treasurer - Dan Stock	<a href="mailto:dstock4239@charter.net">dstock4239@charter.net</a>
Secretary - Deb Miller	<a href="mailto:millerdb613@gmail.com">millerdb613@gmail.com</a>
Scott Lingo	<a href="mailto:scott@targetrealestate.com">scott@targetrealestate.com</a>
Carole Plunkey	<a href="mailto:caroleplunkey@charter.net">caroleplunkey@charter.net</a>

Non-Voting Advisors

US Forest Service	Huron Pines RC&D
USDA-NRCS	EGLE/Water Division
US Fish & Wildlife	DNR/Fisheries

**HOW CAN I VOLUNTEER FOR PRVEL?**

Our conservation group is comprised totally of volunteers, all working together to make things happen for the benefit of the watershed. Please step forward and make 2022 the year you help us make a difference in your neck of the woods.

Ways you can volunteer:

- Macro invertebrate sampling program – Spring and Fall
- Monitoring fishery – place temp loggers
- River Keepers/monitor watershed out in the field
- Write articles for the newsletter
- Serve on the watershed board of directors
- Project workers – out in the field (seasonal)
- Fund raising – bring ideas to attention of

Contact via email as shown above

- Deborah Miller
- Scott Lingo
- Carole Plunkey
- Dan Stock
- Russell Williams
- Russell Williams
- any board member

Yes! I wish to support the water resource improvement efforts in the Pine River Van Etten Lake Watershed with my tax deductible contribution.

Please make your check payable to PRVEL Watershed Coalition and send to:

PRVEL Watershed Coalition  
PO Box 680  
Oscoda, MI 48750

Name \_\_\_\_\_

Street \_\_\_\_\_

City \_\_\_\_\_

State/Zip \_\_\_\_\_

Phone \_\_\_\_\_

E-mail \_\_\_\_\_